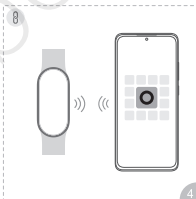
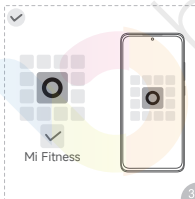
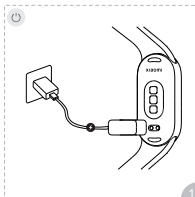




xiaomi Smart Band 10

User Manual



Specifications

Product: Smart Band
Model: M2459B1
Battery Type: Lithium-ion polymer battery
Battery Capacity: 233 mAh
Input: 5.0 V == 500mA Max.
Water Resistance: 5 ATM
Operating Temperature: 0°C to 43°C

Net Weight: 27g (Including strap)
Item Dimensions: 46.6 × 22.5 × 11 mm
Adjustable Length: 135–210 mm
Bluetooth Frequency: 2402–2480 MHz
Maximum Output: ≤ 14.5 dBm
Wireless Connectivity: Bluetooth® 5.4

For product certifications related to this band, please go to Settings > About band > Regulatory



For more function details and operation instructions, please scan the QR code to view the user guide.



The Bluetooth® word mark and logos are registered trademarks owned by Bluetooth SIG, Inc. and any use of such marks by Xiaomi Inc. is under licence. Other trademarks and trade names are property of their respective owners.

2025.05 on the product indicates that this product will be launched after 2025.05.

Precautions

1. Wear the band around your wrist about one-finger's width away from your wrist bone. Wearing the band too loosely may affect the accuracy of the heart rate monitoring data.
2. When using the band to measure your heart rate, please keep your wrist still.
3. The band has a water resistance rating of 5 ATM (50 metres depth). It can be worn in the swimming pool, while swimming near the shore, or during other shallow-water activities. Furthermore, remember to avoid the band being directly impacted by swift currents during water sports. The water resistance function is not permanent and may diminish over time.
4. The touchscreen of the band does not support underwater operation. When the band comes into contact with water, use a soft cloth to wipe away excess water from its surface before use.
5. During daily use, avoid wearing the band too tightly and try to keep its contact area dry. Please clean the wristband regularly with water.
6. If the contact area on your skin shows signs of redness or swelling, stop using the product immediately and seek medical assistance.
7. This band is not a medical device. Any data or information provided by the band should not be used as a basis for diagnosis, treatment, or prevention of diseases.
8. This product is not a toy and contains small parts. Please keep it out of reach of children to prevent choking or other injuries caused by accidental swallowing of small parts.

9. The lithium battery in this band cannot be removed. To avoid damage to the battery or the band, do not replace the battery by yourself. There is a risk of explosion if the wrong type of battery is used. Do not dispose of used batteries with household waste. Dispose of this band and used batteries in accordance with local laws and regulations.
10. Do not disassemble, strike, crush or throw the battery into fire. Stop using the product immediately if there is any swelling. Do not expose it to sunlight, fire or environments where the ambient temperature is extreme.
11. When planning not to use the band for a long period of time, it is advisable to turn off the band and store it away. To avoid damage caused by the over-discharge of the battery, fully charge the band every 6 months.
12. The lithium battery in this band cannot be removed. Do not replace the battery by yourself.
13. Do not put the battery into a fire or a hot oven, or mechanically crush or cut the battery, which could cause it to explode.
14. Leaving the battery in an extremely high temperature environment may result in an explosion or the leakage of flammable liquid or gas.
15. Subjecting the battery to extremely low air pressure may result in an explosion or the leakage of flammable liquid or gas.
16. Keep the product's indicator away from the eyes of children and animals while the product is in use.
17. Use only the included or manufacturer-approved charging cable compatible with this model. If the band overheats or fails to charge, disconnect it immediately to prevent damage.

WEEE Disposal and Recycling Information



All products bearing this symbol are waste electrical and electronic equipment which should not be mixed with unsorted household waste. Instead, you should protect human health and the environment by handing over your waste equipment to a designated collection point for the recycling of waste electrical and electronic equipment, appointed by the government or local authorities. Correct disposal and recycling will help prevent potential negative consequences to the environment and human health. Please contact the installer or local authorities for more information about the location as well as terms and conditions of such collection points.

EU Declaration of Conformity



CE mark is applicable to product and built-in battery. Hereby, Xiaomi Communications Co., Ltd. declares that the radio equipment type M2459B1 is in compliance with Directive 2014/53/EU and Regulation (EU) 2023/1542. The full text of the EU declaration of conformity is available at the following internet address:
<http://www.mi.com/global/service/support/declaration.html>

This equipment has been tested and meets applicable limits for radio frequency (RF) exposure.

Specific Absorption Rate (SAR) refers to the rate at which the body absorbs RF energy. SAR limits depend on whether this equipment is used against the head or on the wrist. The SAR limit is 2.0 watts per kilogram averaged over 10 grams of tissue for use against the head and 4.0 watts per kilogram averaged over 10 grams of tissue for use on the wrist.

During testing, this equipment radios are set to their highest transmission levels and placed in positions that simulate use next to the body.

The highest SAR value reported under this standard during product certification when properly worn on the wrist operation SAR is :0.139 W/kg

Warranty Notice

As a Xiaomi consumer, you benefit under certain conditions from additional warranties. Xiaomi offers specific consumer warranty benefits which are in addition to, and not instead of, any legal warranties provided by your national consumer law. The duration and conditions related to the legal warranties are provided by respective local laws. For more information about the consumer warranty benefits, please refer to Xiaomi's official website <https://www.mi.com/-global/support/warranty>. Except as prohibited by laws or otherwise promised by Xiaomi, the after-sales services shall be limited to the country or region of the original purchase. Under the consumer warranty, to the fullest extent permitted by law, Xiaomi will, at its discretion, repair, replace or refund your product. Normal wear and tear, force majeure, abuse or damage caused by the user's negligence or fault are not warranted. The contact person for the after-sale service may be any person in Xiaomi's authorized service network, Xiaomi's authorized distributors or the final vendor who sold the products to you. If in doubt please contact the relevant person as Xiaomi may identify.

The present warranties do not apply in Hong Kong and Taiwan.

Products which were not duly imported and/or were not duly manufactured by Xiaomi and/or were not duly acquired from Xiaomi or a Xiaomi's official seller are not covered by the present warranties. As per applicable law you may benefit from warranties from the non-official retailer who sold the product. Therefore, Xiaomi invites you to contact the retailer from whom you purchased the product.

Disclaimer: The illustrations of the product, accessories, user interfaces, and other elements in the user manual are schematic diagrams for reference only, and may differ slightly from the actual product. This manual is published by Xiaomi or an enterprise in Xiaomi's ecosystem. Typographical errors and inaccurate information in this manual or the related programs and/or equipment may change without prior notice. Such changes will be indicated in the latest version of the manual.

Manufacturer: Xiaomi Communications Co., Ltd.
Address: #019, 9th Floor, Building 6, 33 Xi'erqi Middle Road, Haidian District, Beijing, China, 100085

Manufacturer's Authorized UK Representative
Name: Xiaomi Technology UK Limited
Address: Davidson House, Forbury Square, Reading, Berkshire RG1 3EU

Manufacturer's Authorized EU Representative
Name: Xiaomi Technology Netherlands B.V
Address: Prinses Beatrixlaan 582, 2595BM, The Hague, The Netherlands
Email: contact@support.mi.com

For further information, please go to www.mi.com

Importer:
Beryko s.r.o.
Pod Vinicemi 931/2, 301 00 Plzeň
www.beryko.cz





berlyko

